

GENERAL NOTES

Decide upon an arrangement to build

(A.) Basic House (B.) Extended House (C.) Extended House with Shed



Note: acrylic parts and their corresponding paper siding are identified with a letter and a number:

F = floor W = wall P = porch R = roof
S = shed & E = extension.
The numbers are clockwise from above.

If you intend to add lighting, and wish to primer or paint the acrylic to avoid light leaking through the walls, the window and door glazing are protectively masked. This should be removed before attaching siding.

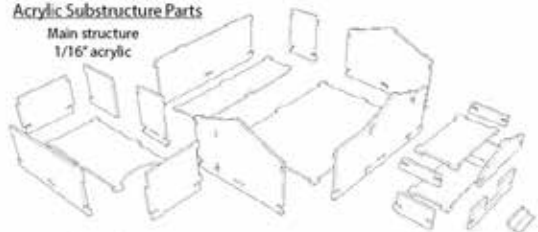
Masking has also been left on the attachment points for the porch and front gable, to facilitate gluing.

Please check included parts against those listed on pages 21 through 25.
If anything is missing let me know immediately at: tsn@tsndesign.com

Acrylic Substructure Parts

Main structure

1/16" acrylic



First, assemble the basic acrylic structure; keep the porch and its gable assembly separate.

Do not force acrylic tabs that are too tight. If necessary, adjust the fit with small files. Acrylic sheet varies considerably in thickness.

Position parts with a square and apply a solvent cement with a brush. I prefer to use Weldon #3 or #4 for gluing acrylic and styrene. If it is unavailable locally it can be found online. Other model cements may also work. Test if unsure.



A 1920's Era Service Station

An HO scale craftsman kit coming soon
tsndesign.com

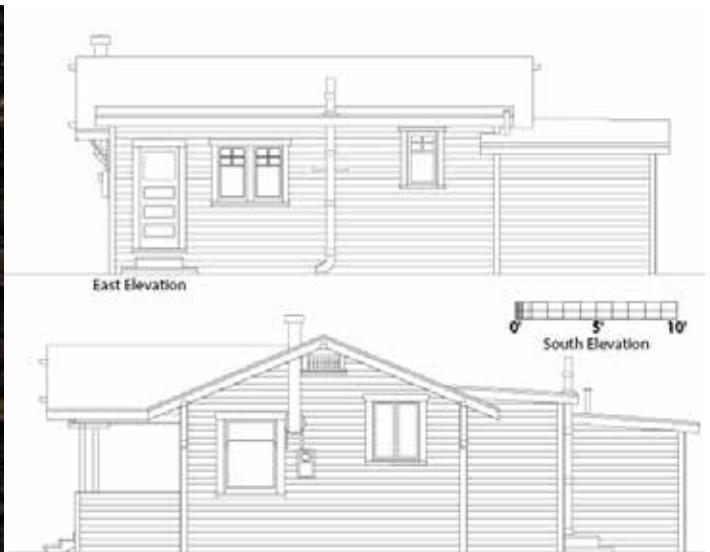


WILBUR AVE. ELEVATION

...bless US all,
EVERYONE!




INDEPENDENCE



DREAM OF DARWIN

a Science for Science

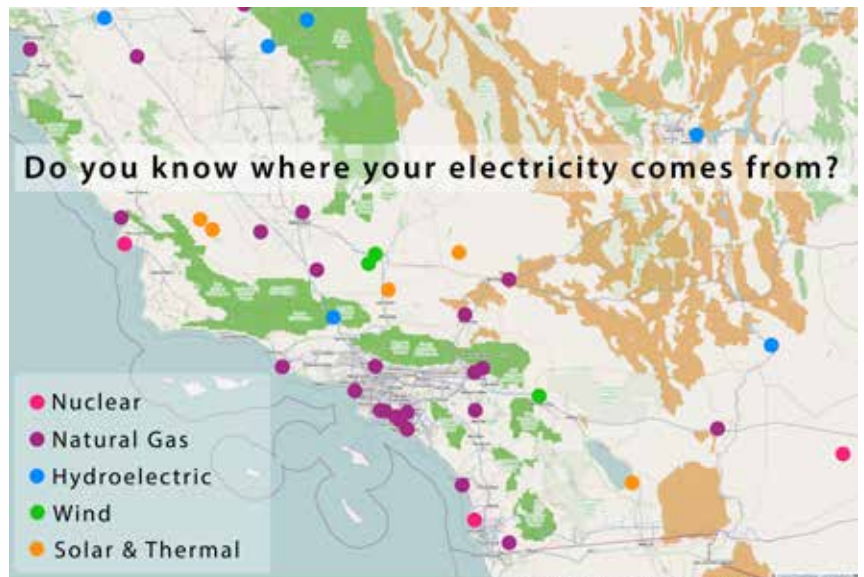


GH

Scholarships
for Machine Technology

To Apply:
Contact Lead Instructor
in room 606 during regular
operating hours

Gene Haas
FOUNDATION

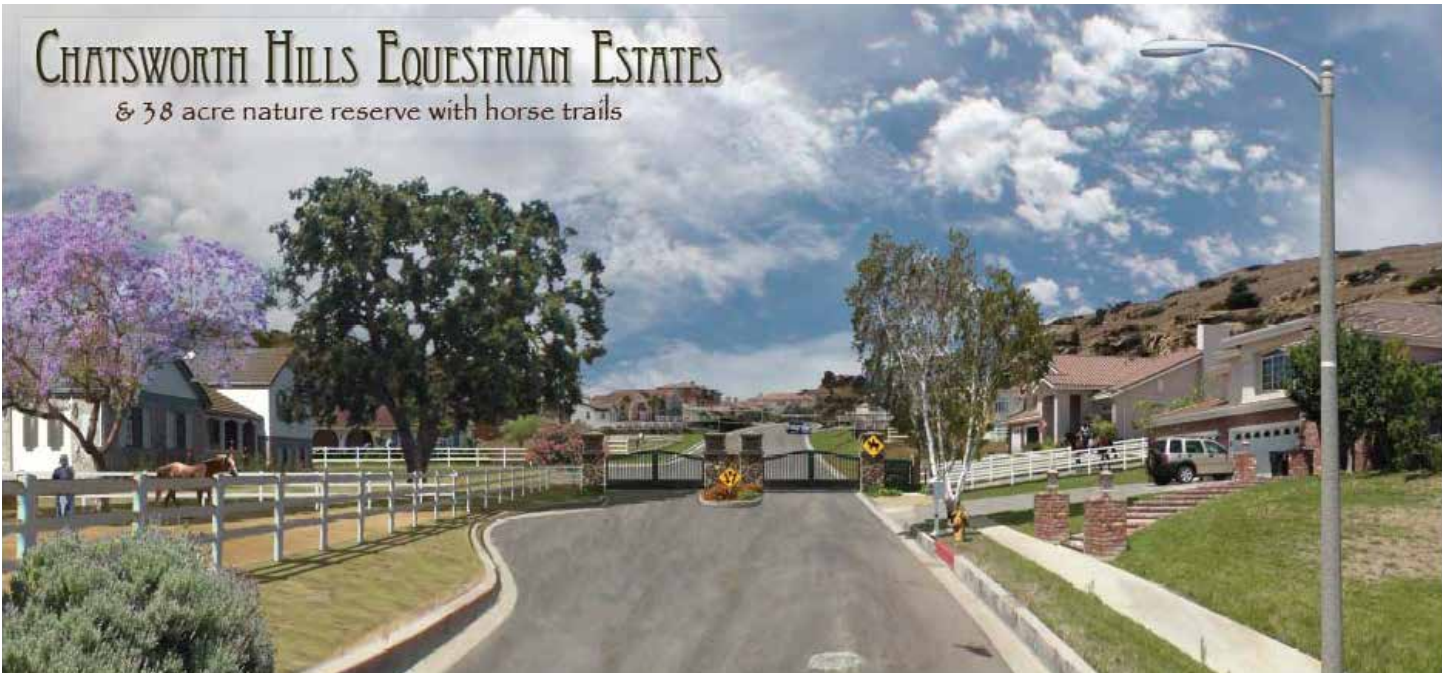


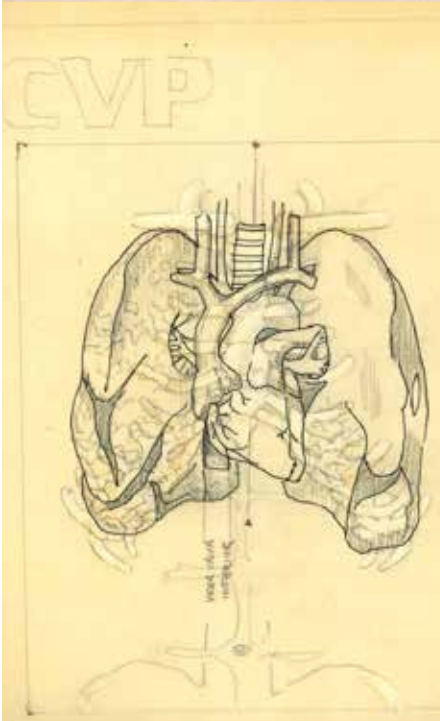
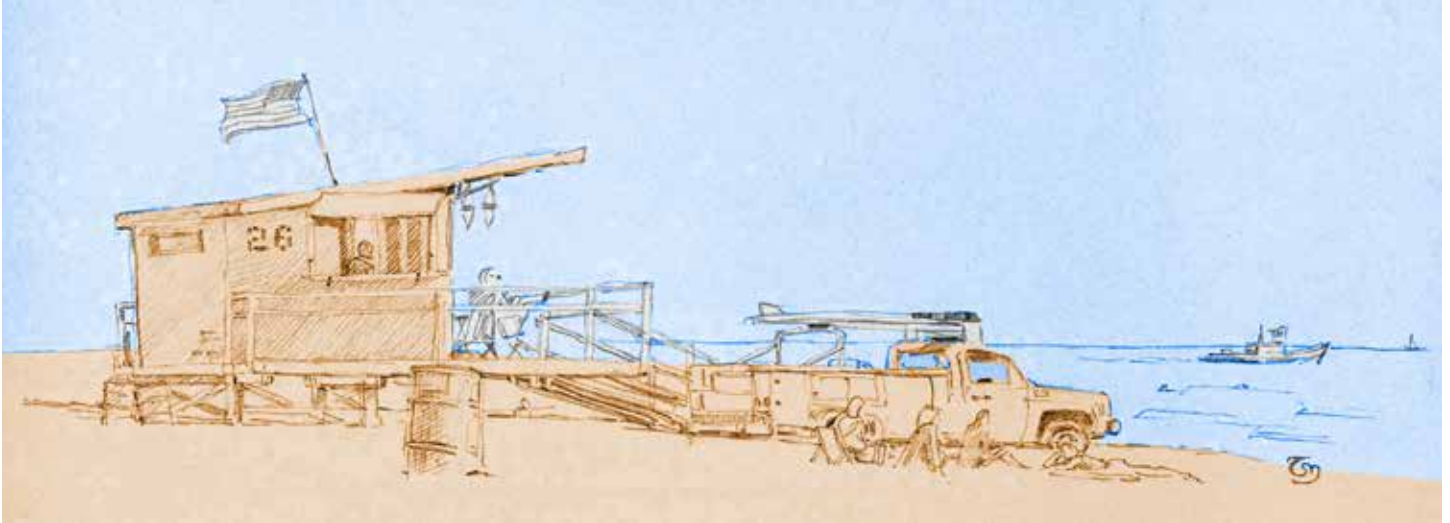
http://en.wikipedia.org/wiki/List_of_power_stations_in_California

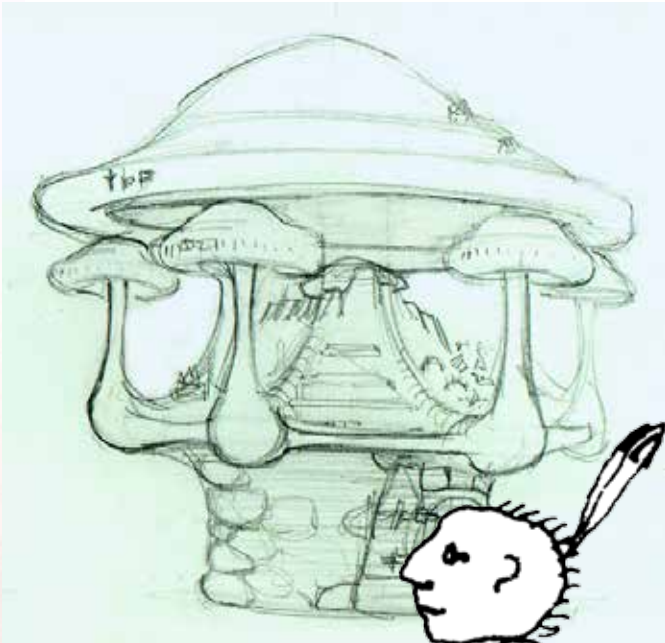
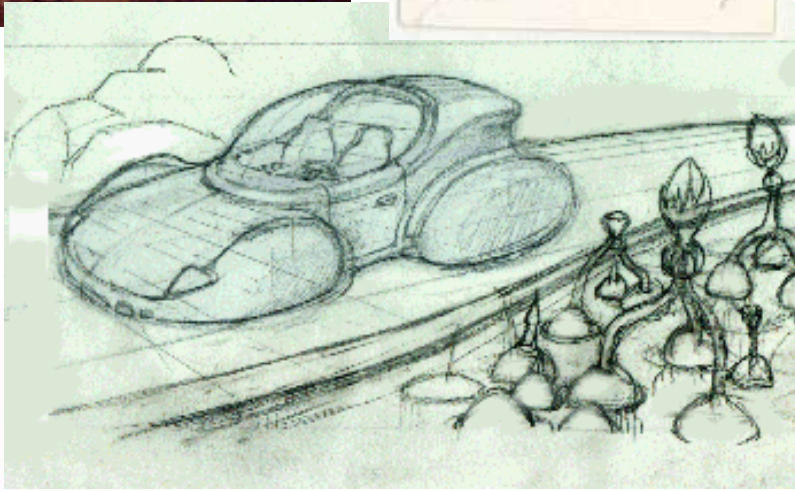
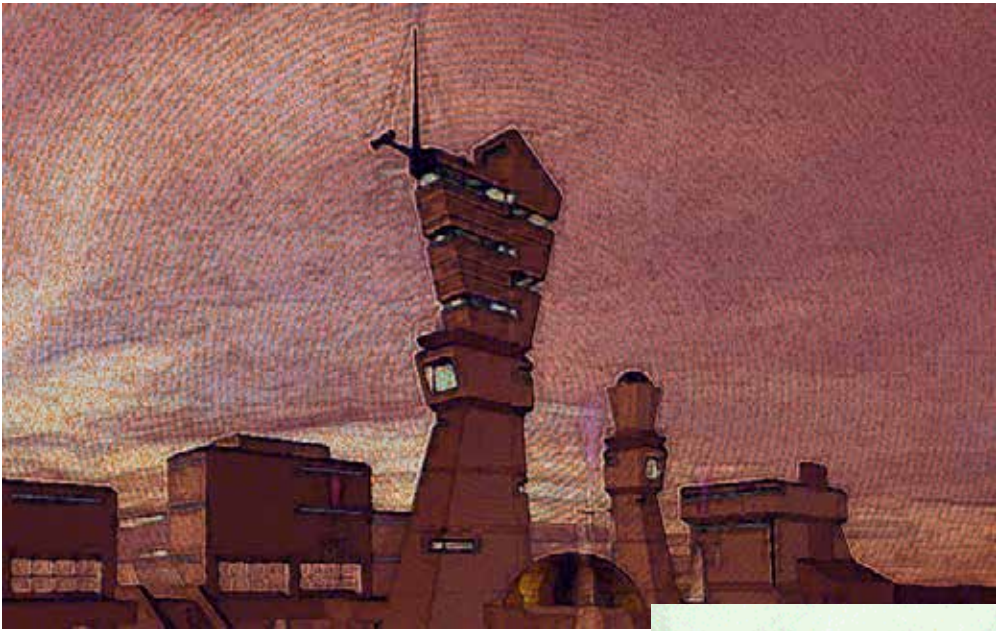
MONEYMISER

US\$

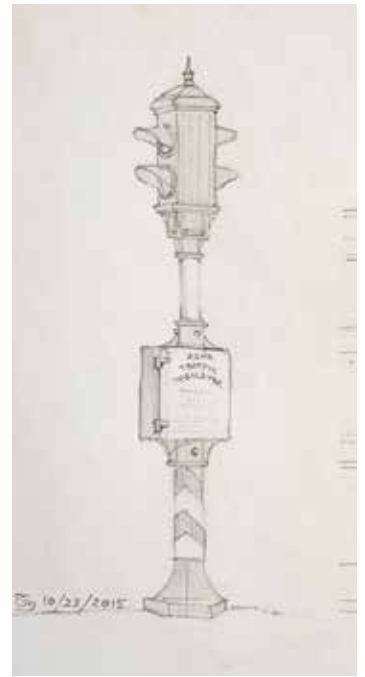


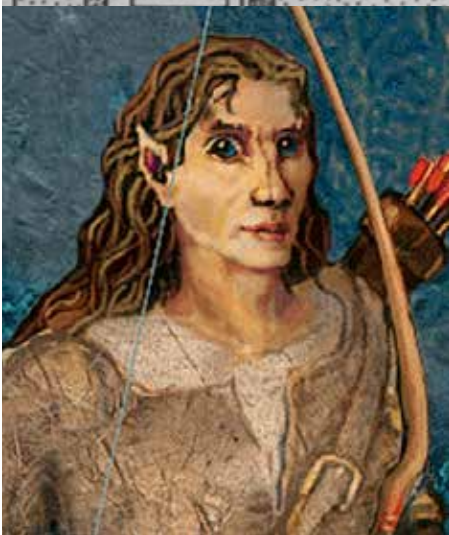
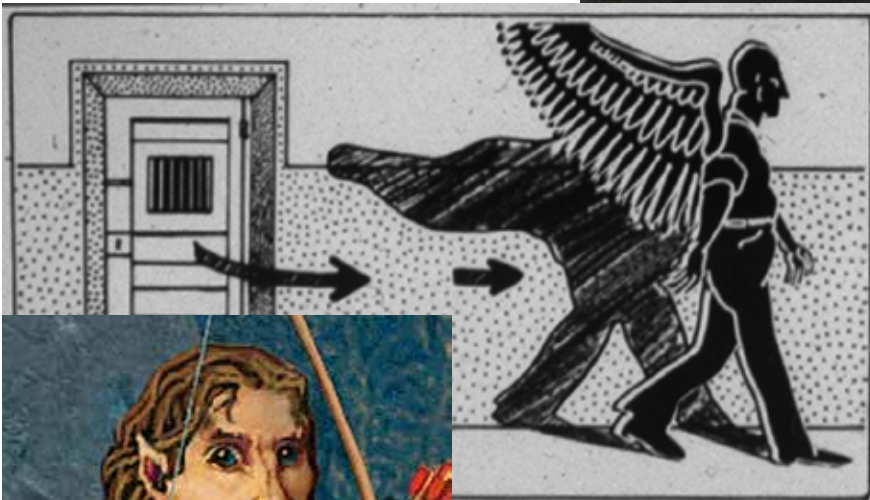


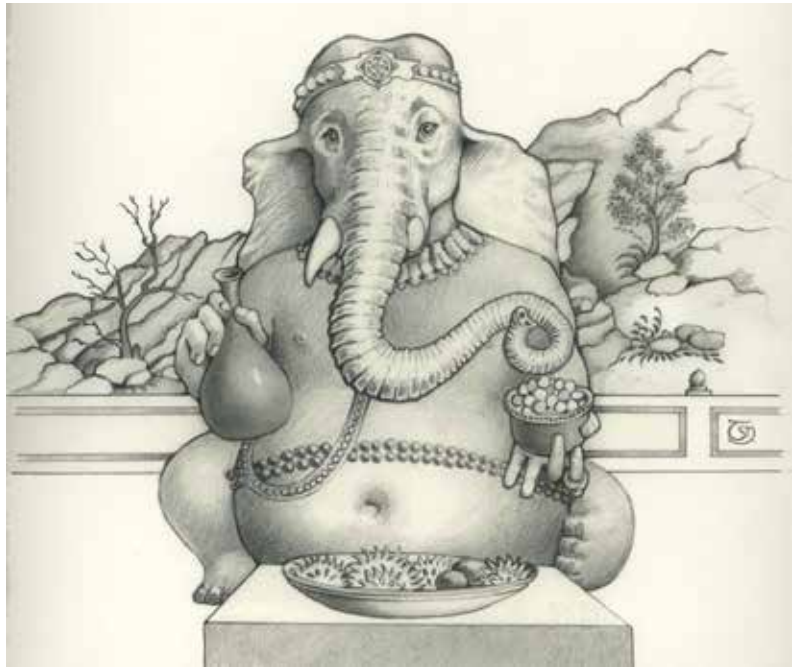












ARE YOU PREPARED FOR AN EARTH QUAKE?



